



# Marina del Rey In-Water Dry Docking Systems Update

MARINA INTERAGENCY COORDINATING COMMITTEE  
& ANTIFOULING STRATEGIES WORKGROUP

JUNE 22, 2021



# Agenda

- 1) Marina del Rey (MdR) Copper Reduction Program
- 2) In-Water Dry Docking Systems
- 3) In-Water Dry Dock Pilot
  - a) Overview
  - b) Key Findings and Considerations
  - c) Next Steps



# Copper Reduction Program Strategies

## Paint Conversion



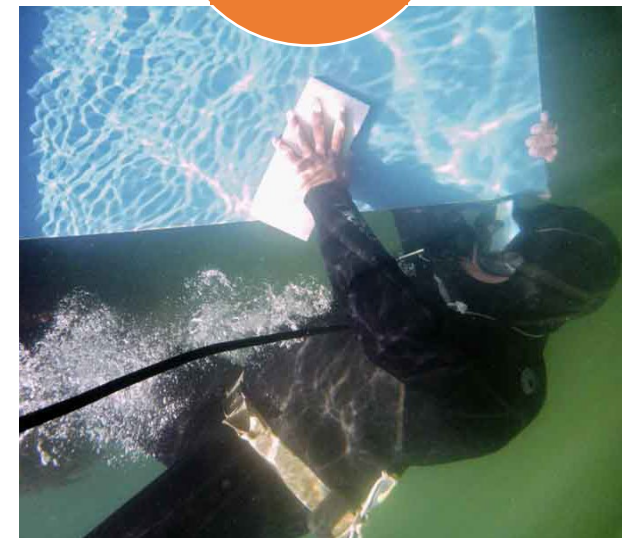
- Non-copper Paints
- Low Leach Rate Copper Paints

## Remove Boat Hull from Water



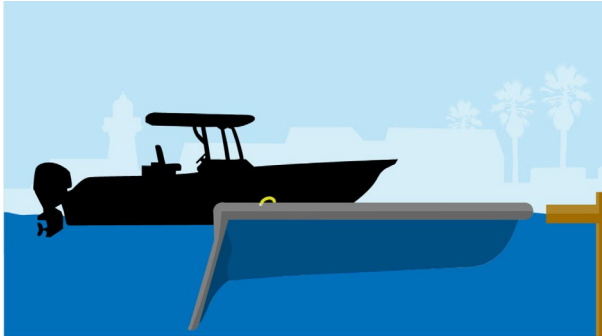
- Boat Lifts
- In-Water Dry Docks

## Hull Cleaning BMPs

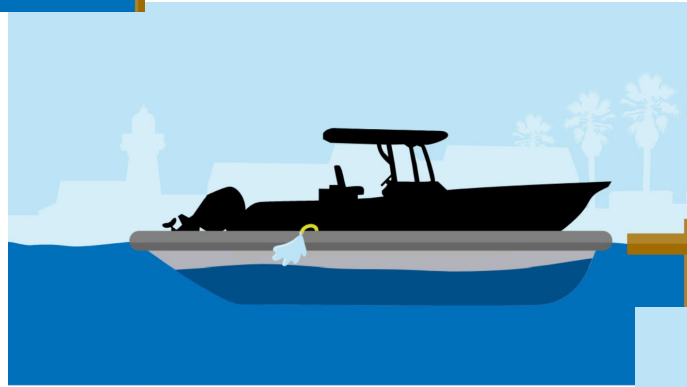


- Mandatory Hull Cleaning BMP Certification

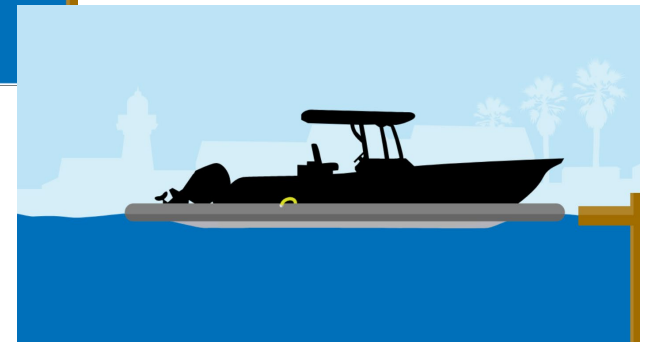
# In-Water Dry Docking Systems



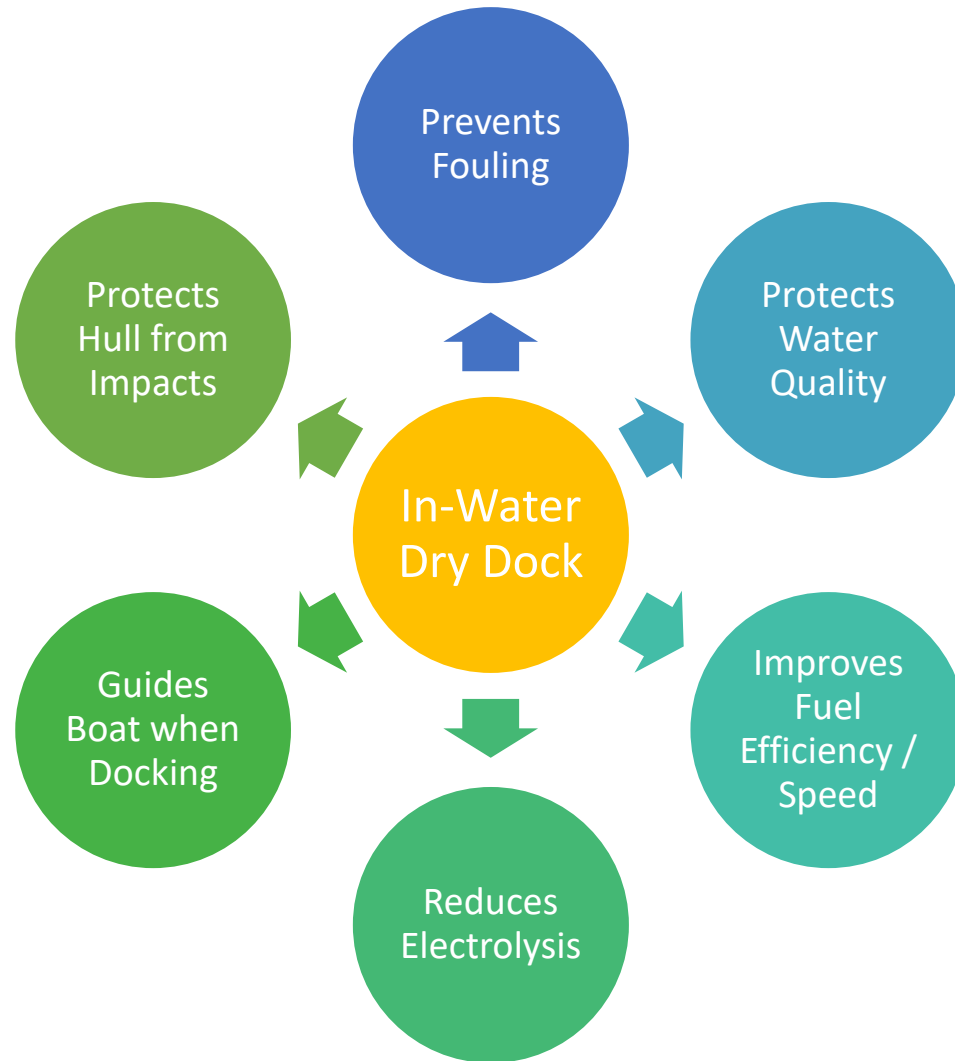
- Back of the device lowers to allow boat to enter and exit through the back
- Water is pumped out from between the liner and boat



- The boat sits dry at the slip while staying at water level



# In-Water Dry Docking Systems: Benefits



# In-Water Dry Docking Systems: Types

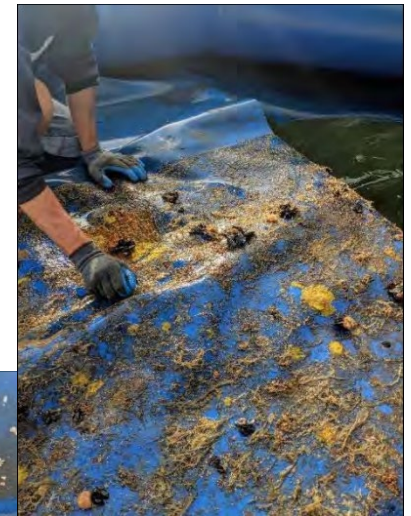
- Designed to certain hull types
- Lower cost (~\$8K-\$24K)
- Runs off boat battery
- One model can fit multiple boat sizes
- Higher cost (~\$15-85K+)
- Runs off dock power





# MdR In-Water Dry Dock Pilot Study

- Initial Trial: Sept 2018 - Sept 2019
- Evaluated benefits during use
- Assessed marine growth when removed from the water



# MdR In-Water Dry Dock Pilot Study

- DBH purchased 2 in-water dry docks for Anchorage 47 in June and October 2019
- Demonstration Event held September 2019
  - Stakeholder concerns about marine growth under the in-water dry dock
  - Questions on time needed to inflate and deflate the device

Cost: \$11K-  
\$13K for 26-  
28ft boat





# MdR In-Water Dry Dock Pilot Study



# Key Findings and Considerations

- Marine organisms can grow on the device – that is ok!
- The reduction in hull maintenance including repainting, stripping, and hull cleaning can provide cost savings
- Better purchase for individual boat owners rather than marinas



# Opportunities Moving Forward

- Both companies are interested in expanding services in CA
- If there is demand, the companies may look into getting a local person set up to help market and support maintenance



# More Information

## MARINA DEL REY HARBOR COPPER IMPAIRMENT FACTS

## MARINA DEL REY HARBOR IN-WATER BOAT HULL CLEANING

## MARINA DEL REY HARBOR IS A BOAT LIFT RIGHT FOR ME?

## MARINA DEL REY HARBOR IN-WATER DRY DOCKING SYSTEMS

In-water dry docking systems keep your boat clean and dry while stored in-slip. These devices are different than boat lifts, as they operate without physically lifting the boat out of the water. They consist of a bottom lining and inflatable bumper that surrounds the boat. The device deflates in the rear to allow the boat to drive in and out. Once the boat is inside, the back of the device inflates, and the water between the boat hull and the liner is removed to leave the boat dry.



Fab Dock in-water dry docking system that was used in the County's 6-month trial with a Sea Scout vessel

### Benefits of Using an In-Water Dry Dock

- Protection of the boat hull** The newest models of in-water dry docking systems are fully automatic, portable, and aid in berthing the boat. The inflatable tubes act as fenders and bumpers to guide the boat in. The boat remains at water level, and the computer-controlled pumps keep the hull dry 24/7, even during rain.
- Reduced cost of operating the boat** This type of system eliminates the need for regular hull cleanings and the application of antifouling paint, which slows the boat down and increases fuel consumption. An in-water dry docking system can quickly pay for itself in maintenance and fuel savings.
- Improve harbor water quality** Use of in-water dry docks helps reduce copper and biocide pollution by reducing the length of time antifouling paints are in contact with harbor water and by eliminating the need for in-water hull cleanings. Unlike traditional slip liners that use a liquid biocide (e.g. bleach) to reduce marine fouling, in-water dry docks pump water out of the liner once the boat is docked, eliminating the hull's contact with water altogether. The in-water dry dock can also protect the water from fuel spills when adding gasoline: spilled fuel can be pumped out of the liner into a container and disposed of at an appropriate waste collection facility.

*Continued other side »*

lacounty.gov | SERVICES LOCATOR | SUBSCRIBE

DEPARTMENT OF BEACHES & HARBORS  
Caring for Our Coast Los Angeles County

MARINA DEL REY BEACHES RESERVATIONS PERMITS & LICENSES PARKING GOVERNMENT COVID-19

GOVERNMENT  
**ENVIRONMENT**

WATER QUALITY  
**Toxics TMDL**

**PROGRAM UPDATE**

- The list of in-water hull cleaning certified divers can conduct can be cited if their boats are certified in fall 2021.
- The County will be distributing certification in fall 2021.
- The Marina del Rey Site-Specific study is anticipated for the Non-biocide Hull Paint.

Updated 6/10/2021

**IN-WATER DRY DOCKING SYSTEMS  
PILOT STUDY REPORT**

February 2020

PREPARED BY  
COUNTY OF LOS ANGELES  
DEPARTMENT OF BEACHES AND HARBORS  
13837 FIJI WAY  
MARINA DEL REY, CA 90292

CONTACT: JENNIFER MONGOLO, PLANNER  
[JMONGOLO@BH.LACOUNTY.GOV](mailto:JMONGOLO@BH.LACOUNTY.GOV)

<https://beaches.lacounty.gov/toxics-tmdl/>

# Questions?

**Maral Tashjian**

Office: (424) 526-7750

[MTashjian@bh.lacounty.gov](mailto:MTashjian@bh.lacounty.gov)

**Brenda Ponton**

Office: (213) 223-9478

[bponton@bh.lacounty.gov](mailto:bponton@bh.lacounty.gov)

